

4.1.1 QIM - The institution has adequate infrastructure facilities for

b. ICT enabled facilities such as smart classes, LMS etc.

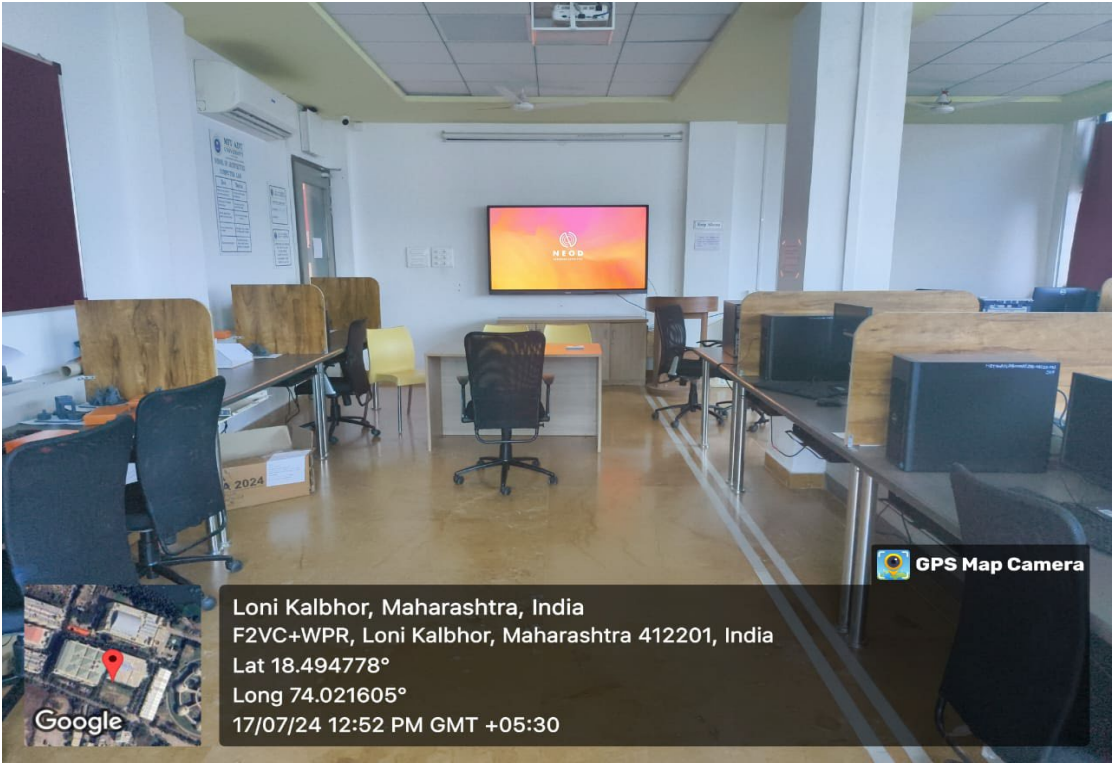
MIT ADT University excels in integrating advanced ICT-enabled facilities across its campus, enhancing both academic engagement and administrative efficiency. At the heart of its technological infrastructure are smart classrooms equipped with interactive smart boards and projectors. These classrooms facilitate dynamic teaching environments where faculty seamlessly integrate multimedia content to engage students effectively and promote collaborative learning experiences.

Central to MIT ADT University's ICT ecosystem is its robust Learning Management System (LMS), anchored by Microsoft Teams and TCS iON ERP. This platform serves as a pivotal tool for course management, content distribution, and student assessment. Faculty utilize the LMS to deliver course materials, conduct virtual classes, and administer assessments, fostering an adaptable learning environment that accommodates diverse educational needs and schedules. Complementing the smart classrooms and LMS is MIT ADT's comprehensive e-library system, providing access to a vast array of digital resources including e-books, journals, and multimedia content. Accessible via the campus-wide Wi-Fi network, the e-library supports research endeavors and enhances academic pursuits, promoting continuous learning and scholarly exploration.

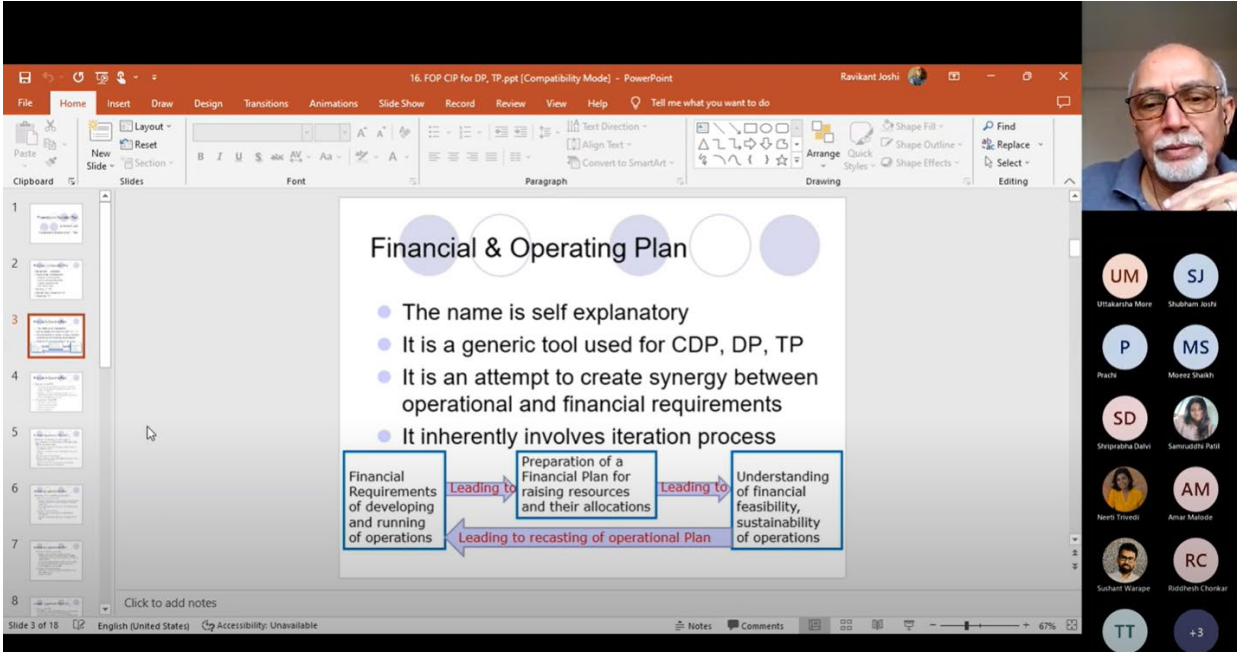
Further bolstering MIT ADT's ICT capabilities are advanced multimedia facilities for lecture capturing and video editing. These resources empower faculty to create and share educational content efficiently, supporting innovative teaching methodologies and enabling flexible learning opportunities for students. Through its commitment to technological innovation, MIT ADT University continues to foster a dynamic academic environment where technology enhances learning, research, and administrative processes, ensuring students and faculty have the tools they need to succeed in the digital era.



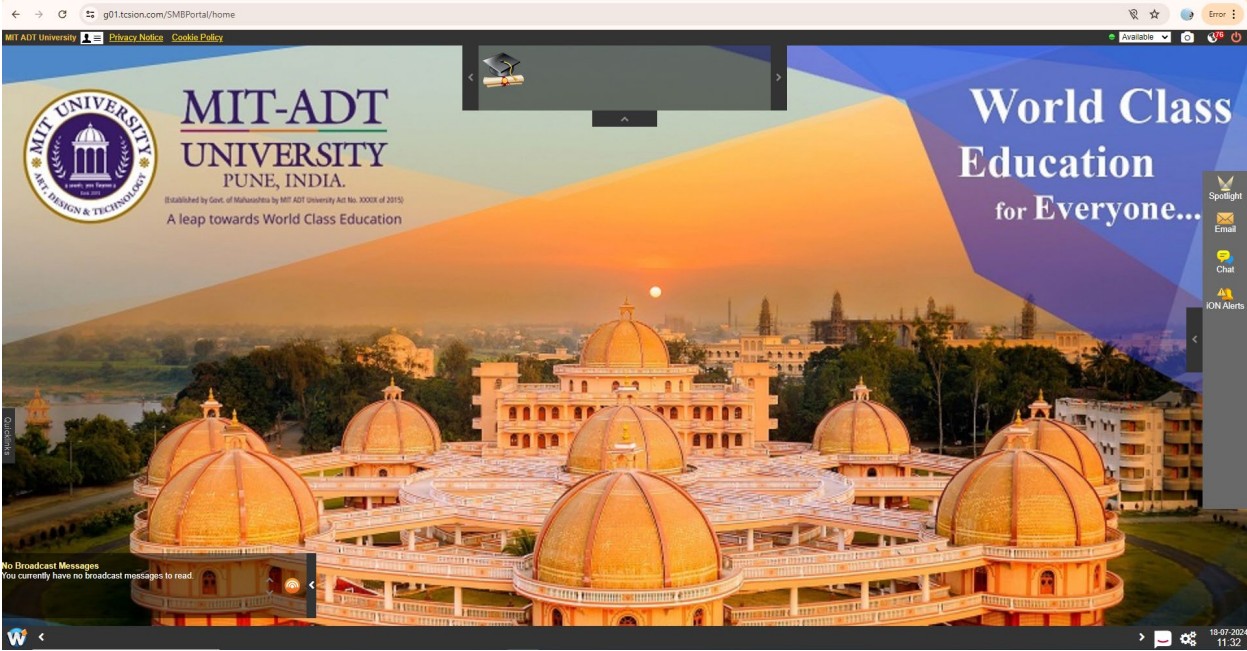
Smart Class with Interactive Screen



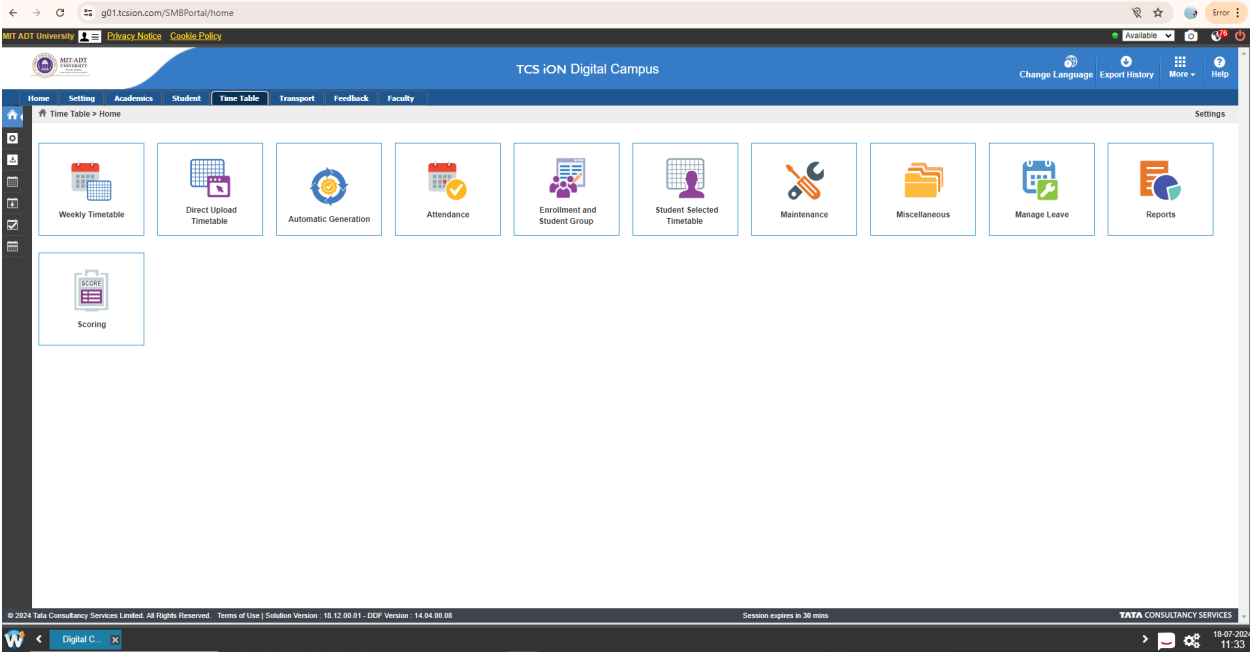
Computer Lab with Interactive Screen



Microsoft Teams LMS



TCS iON LMS



The screenshot shows the TCS iON Digital Campus interface. At the top, there is a navigation bar with the MIT-ADT logo and the text "TCS iON Digital Campus". Below this, there are tabs for "Home", "Setting", "Academics", "Student", "Time Table", "Transport", "Feedback", and "Faculty". The "Time Table" tab is currently selected. The main content area displays a grid of icons for various functions: Weekly Timetable, Direct Upload Timetable, Automatic Generation, Attendance, Enrollment and Student Group, Student Selected Timetable, Maintenance, Miscellaneous, Manage Leave, and Reports. A "Scoring" icon is also visible below the grid. The footer contains copyright information for Tata Consultancy Services Limited, version details, and a session expiration notice.

TCS iON LMS

List of Smart Boards Installed in Classrooms / Training Halls

S.N.	Room Nos.	Building	Smart Board Make and Size	Qty.
1.00	MIT School Of Fine Arts and Applied Arts (SOFA)			
1.01	202	IOD-3	Neod - 75"	01
1.02	101, 205	IOD-3	Neod - 86"	02
Sub-Total:				03
2.00	MIT Institute Of Design (IOD)			
2.01	B201	IOD-2	Neod - 86"	01
2.02	B301	IOD-2	Neod - 75"	01
Sub-Total:				02
3.00	MIT School Of Computing (SOC) – Computer Science and Engineering Dept.			
3.01	N-503, N-505, N-507, N-509, N-515	IT	Benq – 75"	05
3.02	S-503, S-509, S-510	IT	Sensus – 75"	03
3.03	N-518	IT	Sensus – 86"	01
3.04	N-510	IT	Neod – 75"	01
Sub-Total:				10
4.00	MIT School Of Computing – Information Technology (IT) Department			
4.01	N-605, N-607, N-609	IT	Benq – 75"	03
5.00	MIT School Of Computing – Applied Science Humanities (ASH)			
5.01	N-114	IT	Sensus – 86"	01

Handwritten signature

Handwritten signature

Handwritten signature



MIT Art, Design & Technology University, Pune

(Estd. by Government of Maharashtra vide Act no. XXXIX of 2015)



MIT-ADT
UNIVERSITY
PUNE, INDIA
A Leap Towards World Class Education

S.N.	Room Nos.	Building	Smart Board Make and Size	Qty.
6.00	MIT School Of Engineering and Sciences (SOES) – Mechanical Department			
6.01	N-205, N208	IT	Neod – 75"	02
6.02	N-207	IT	Sensus – 75"	01
Sub-Total:				03
7.00	MIT School Of Engineering and Sciences – Civil Engineering Dept. (Civil)			
7.01	N-106	IT	Sensus – 75"	01
7.02	N-108	IT	Neod – 75"	01
Sub-Total:				02
8.00	MIT School Of Engineering and Sciences – Electronics and Communication Engineering Department (ECE)			
8.01	S-104, S110	IT	Benq – 75"	02
8.02	S109	IT	Neod – 75"	01
Sub-Total:				03
9.00	MIT School Of Engineering and Sciences – Aerospace Engineering (AERO)			
9.01	N-405	IT	Neod – 75"	01
10.00	MIT School Of Food Technology (SOFT)			
10.01	404, 403	SOFT	Neod – 75"	02
11.00	MIT Art, Design and Technology University, Pune's School Of Architecture (SOA)			
11.01	307		Neod – 75"	01
11.02	407		Neod – 86"	01
Sub-Total:				02

Page 2 of 3

Vishwarajbaug, Loni Kalbhor,
Pune - 412 201 (MS) INDIA.

Tel: +91 20 2691 2900 / 01 / 02 / 03
enquiry@mituniversity.edu.in

www.mituniversity.ac.in

ms of ed

[Signature]

Neels





S.N.	Room Nos.	Building	Smart Board Make and Size	Qty.
12.00	MIT School Of Bioengineering Sciences and Research (SBSR)			
12.01	004, 408-410	SFT	Benq – 75"	02
13.00	MIT School of Holistic Development (SHD)			
13.01	S-312,S-313, S-314, S319	IT	Logic – 65"	04
14.00	MIT School of Corporate Innovation and Leadership (SCIL)			
14.01	Training Hall	SFT	Sensus – 86"	01
15.00	MIT ADTU EPO Conference Hall			
15.01	Conference Room	MANET	Benq – 75"	01
Total:				40

Prepared BY	Verified By	Approved BY
CCTV Technician	Manager, AV Services	CTO

