

Unlocking Nature's Treasure: A Visionary Master Plan for Sustainable Tourism in Lonavala

Shubham C. Joshi¹, and Harshad Raison²,

¹Researcher, Department of Planning, MITSOA, MIT-ADT University, Pune.

²Associate Professor, Department of Planning, MITSOA, MIT-ADT University, Pune.

Email ID: shubhamcjoshi@gmail.com

Abstract

In the mesmerizing embrace of Lonavala's hilly region lies an untapped treasure, a symphony of nature's wonders waiting to be discovered. This research paper unveils a visionary zonal eco-tourism master plan, carefully crafted to harness the region's environmental and geographical factors for sustainable development. Drawing upon land suitability maps, land use and land cover data, forest area buffers, and environmental protection measures, this plan aims to unlock the potential of Lonavala as a beacon of sustainable tourism while preserving its pristine natural beauty. Extensive fieldwork, encompassing surveys, stakeholder interviews, and meticulous analysis of various datasets, forms the foundation of this comprehensive study. Tourism, in our modern society, holds a pivotal role as a catalyst for economic, social, and cultural advancement. The vital core of this research lies within the questionnaires, physically administered at different locations across the region. The evaluation of land suitability for the eco-tourism project embraced a conservationist perspective, prioritizing the delicate balance between development and the preservation of nature's legacy. The strategy outlined in this research sets its sights on tackling key environmental challenges while driving sustainable development objectives forward. By meticulously analyzing the influence zones surrounding each tourist spot, a tapestry of understanding emerged, leading to the implementation of innovative goathan proposals grounded in the research's findings. The significance of this research extends beyond the borders of Lonavala. As Lonavala's hills beckon explorers and dreamers alike, this research paper stands as a testament to the harmonious coexistence of human aspirations and nature's grandeur. In the realms of this zonal eco-tourism master plan, the majesty of Lonavala's hilly region finds its voice where sustainable tourism paves the way for a world where nature thrives and humanity flourishes.

Keywords: Zonal eco-tourism, Sustainable tourism, Environmental Conservation, Land suitability, Master plan.

What Initiative Should Take to Minimize the Impact of Tourism on the Environment And Biodiversity?

This research embraces a holistic and comprehensive approach to nature and wildlife conservation, recognizing the interplay between environmental, cultural, and economic factors. It seeks to go beyond traditional conservation practices by incorporating the socioeconomic well-being of local communities as an integral part of the equation. By promoting sustainable tourism initiatives, the research aims to create income and opportunities for local communities while minimizing environmental negative impacts. This approach emphasizes the importance of balancing economic development with the preservation of natural resources and biodiversity. The research strives to inspire a sense of responsibility and commitment toward safeguarding natural resources by raising awareness about the importance of environmental conservation and highlighting the interconnectedness between ecosystems, wildlife, and communities.

Through its comprehensive approach, this research aims to ensure the long-term viability of the environment while simultaneously enhancing the quality of life for local communities. By promoting sustainable practices, fostering cultural preservation, and generating economic opportunities, it seeks to create a harmonious balance that benefits both nature and the communities that depend on it. By implementing sustainable practices, such as responsible visitor behavior, resource conservation, and appropriate infrastructure development, the research aims to ensure the long-term sustainability of the ecotourism experience. Furthermore, the study emphasizes the need for effective tourism management strategies, including visitor capacity planning, monitoring and regulation, stakeholder engagement, and community involvement. These strategies seek to strike a balance between visitor enjoyment and minimizing the negative impacts on the environment

BACKGROUND STUDY

The biodiversity-rich hilly areas of western ghats in Maharashtra are facing neglect and degradation due to rapid urbanization, haphazard development, and poor tourist management practices. These regions, characterized by abundant biodiversity and connectivity to major roads, require immediate attention and conservation efforts to prevent the loss of their unique identity.

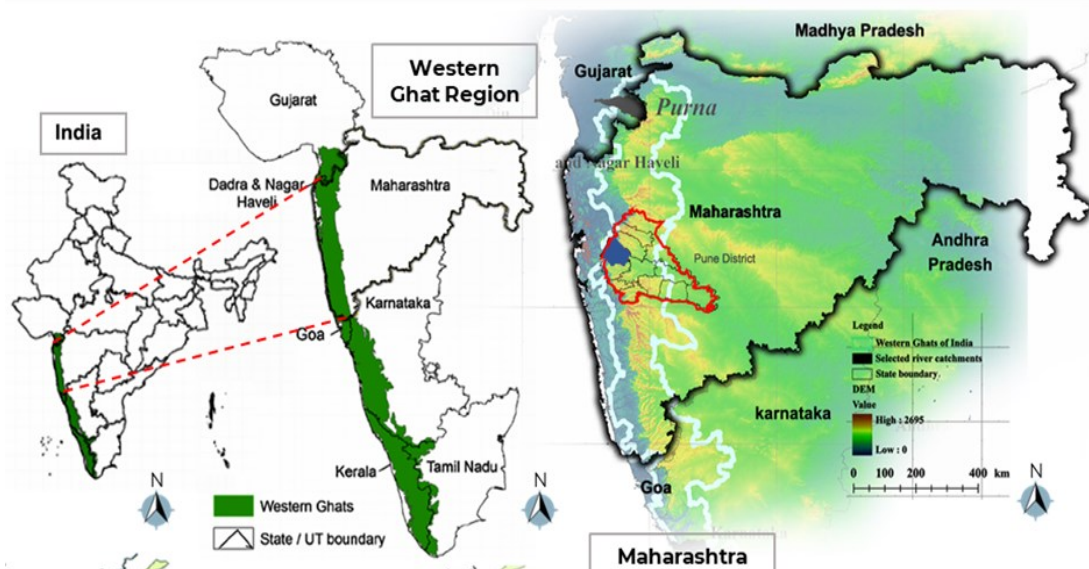


FIGURE 1

International Conference on Future of skills in Architecture, Design, Planning and Allied Fields: A way forward for better Industry and Society

It is crucial to prioritize the identification of such vulnerable zones and implement zonal ecotourism master plans to ensure their protection and sustainable development. Despite numerous researchers' recognition of conservation-related problems, effective measures to address these issues remain crucial. Implementation of regulations on tourist activities within sensitive areas is imperative to mitigate the negative impacts of uncontrolled tourism. By establishing guidelines and restrictions, it is possible to prevent habitat destruction, pollution, and disturbance to wildlife in ecologically sensitive regions. These regulations can include visitor capacity limits, designated trails, waste management protocols, and restrictions on harmful practices.

Equally important is the generation of awareness among tourists and local communities about the importance of conserving these areas. Education campaigns, interpretive signage, and visitor centers can serve as platforms for disseminating information on the ecological significance, biodiversity, and cultural value of these landscapes. By fostering a sense of responsibility and respect for the environment, visitors can become active participants in conservation efforts. This research proposes conservation measures that should be implemented by officials and advocates for the decentralization of tourism to maintain ecological balance.

RESEARCH METHODOLOGY

The questionnaire survey conducted at various locations within the region played a crucial role in gathering comprehensive data. The survey encompassed four distinct types: tourist survey, accommodation survey, organization and association survey, and expert questionnaire. In addition to the survey questionnaire, a distinctive conservation-oriented methodology was adopted to enhance the research approach.

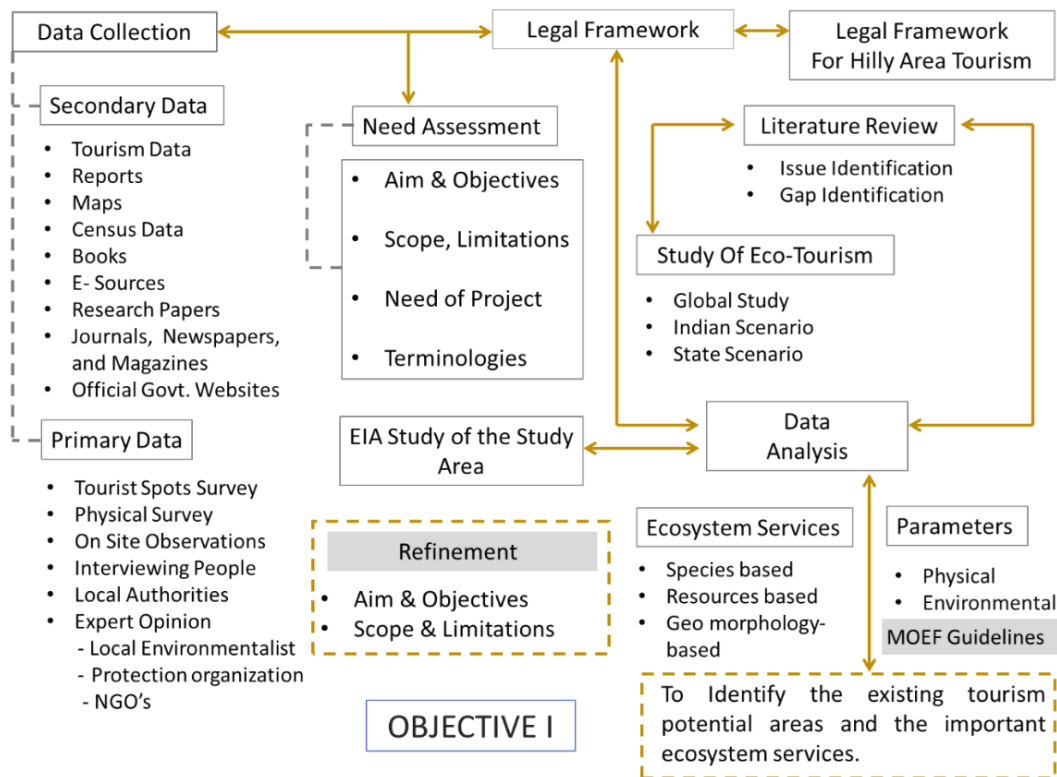


FIGURE 2(a)

International Conference on Future of skills in Architecture, Design, Planning and Allied Fields: A way forward for better Industry and Society

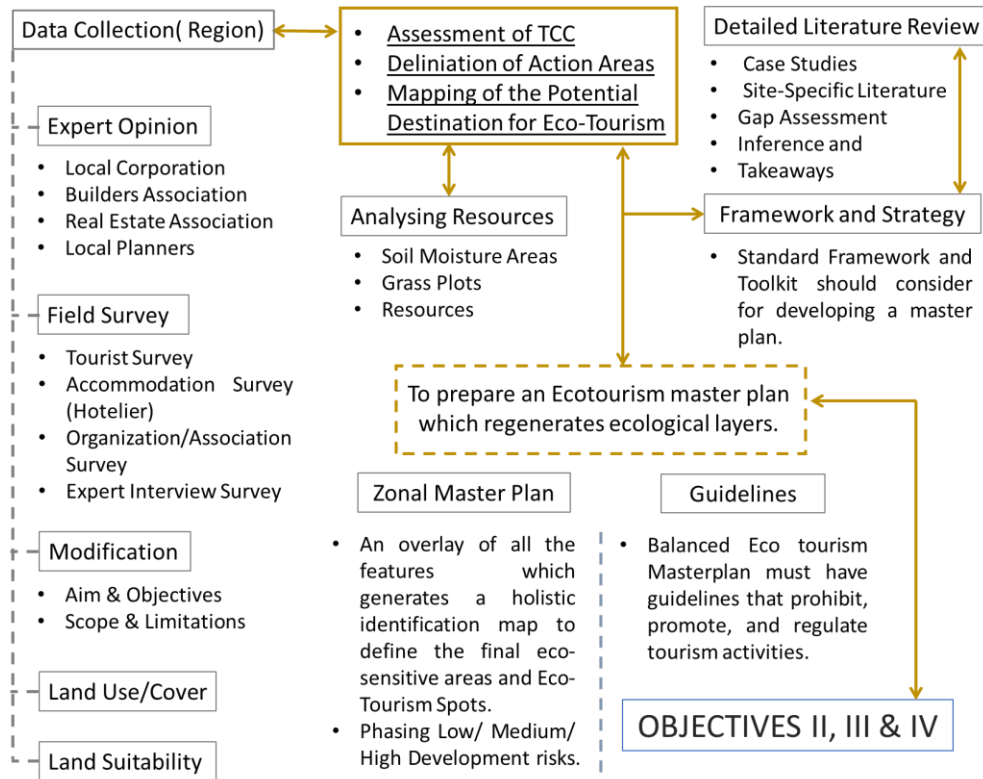


FIGURE 2(b)

The methodology for this dissertation consisted of two main stages: data collection and analysis. The data collection stage included secondary data collection from various sources and primary data collection through physical surveys and expert consultations. The literature review stage involved studying existing research, identifying gaps, and conducting case studies. Environmental impact assessment and consultations with experts further informed the research. The methodology also emphasized the consideration of tourist carrying capacity and the exploration of an eco-tourism approach. The findings were used to propose a zonal master plan for sustainable and inclusive development while preserving the region's environment. Overall, the methodology ensured a comprehensive and well-grounded approach to address the research objectives.

The land suitability assessment for this eco-tourism project takes a comprehensive approach to prioritizing environmental conservation. The primary goal is to ensure that all aspects of the project align with the principles of preserving and protecting the natural environment. This assessment recognizes that the long-term success and sustainability of the project depend on the health and integrity of the ecosystems it operates within. To achieve this, the assessment focuses on carefully evaluating several key parameters. Biodiversity assessment involves studying the richness and diversity of plant and animal species present in the area, as well as identifying any endangered or vulnerable species that require special attention. Habitat preservation examines the importance of maintaining intact habitats, including forests, wetlands, and other sensitive ecosystems, to support wildlife populations and ecological balance. By prioritizing environmental conservation in the land suitability assessment, the project strives to create a sustainable model of eco-tourism that operates in harmony with the natural environment. By implementing conservation measures and integrating them into the project's design and operation, the aim is to protect the area's ecological integrity, preserve biodiversity, and ensure the long-term viability of the ecosystem.

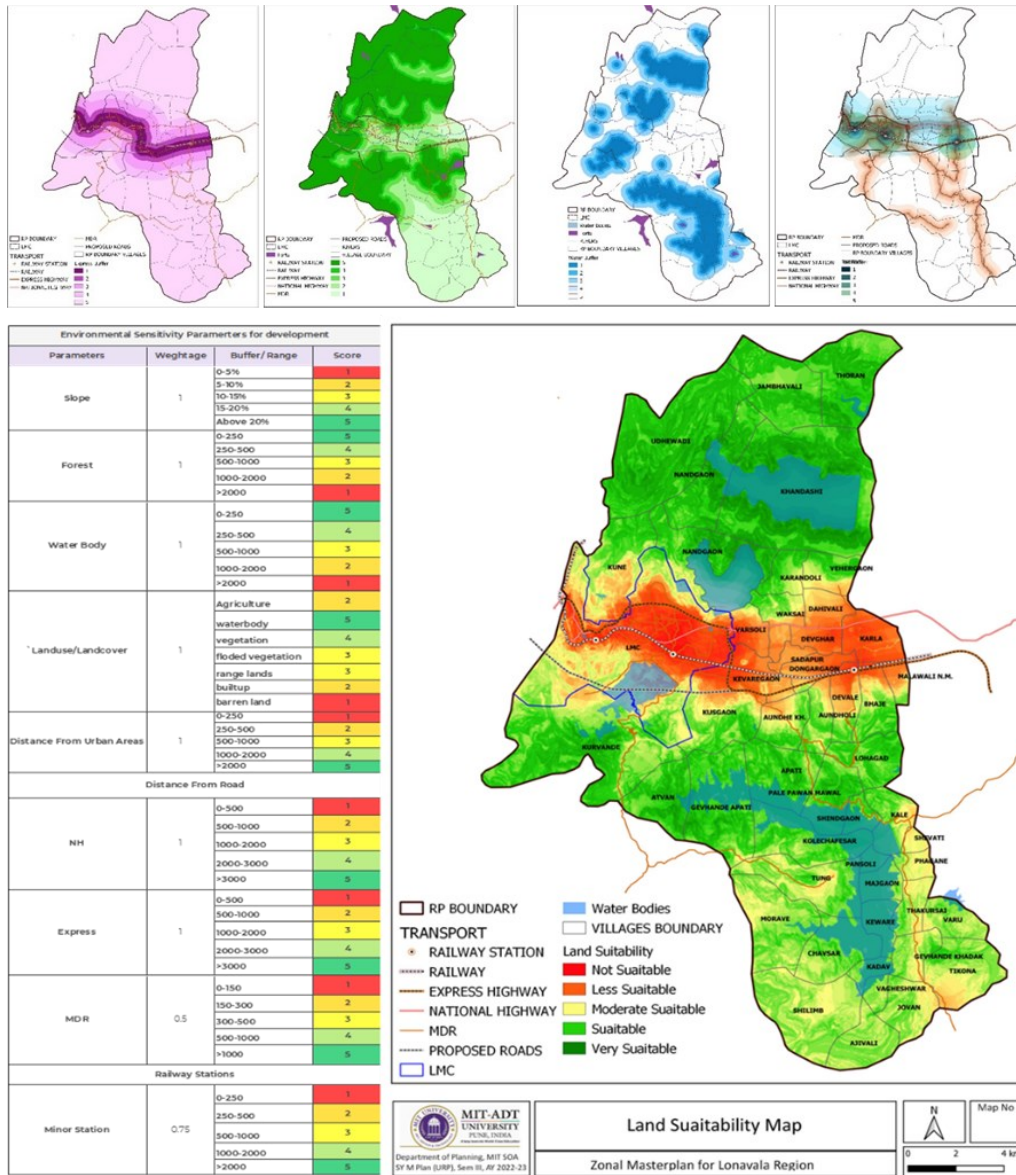


FIGURE 3

RESULTS

The proposal aims to develop a Zonal Eco-Tourism Master Plan that prioritizes the integrity of ecosystems and promotes biodiversity conservation. This plan would involve identifying specific zones within a region that possess unique ecological features, such as forests, wetlands, or wildlife habitats. It would outline guidelines and regulations to ensure responsible tourism practices in these areas, minimizing environmental negative impacts. The plan would also emphasize the preservation of biodiversity, promoting education and awareness programs to highlight the importance of conservation. By integrating sustainable tourism with ecosystem protection, the Zonal Eco-Tourism Master Plan would strive to create a harmonious balance between economic development and environmental preservation.

International Conference on Future of skills in Architecture, Design, Planning and Allied Fields: A way forward for better Industry and Society

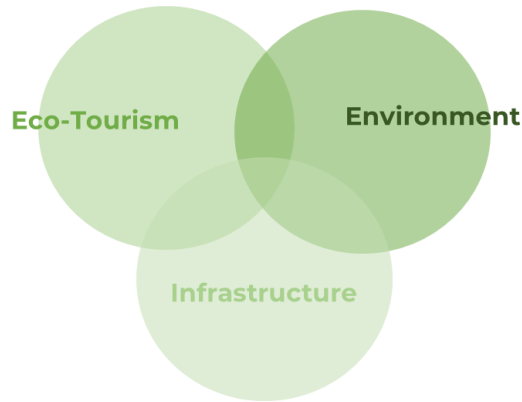


FIGURE 4

The proposal aims to develop a Zonal Eco-Tourism Master Plan that prioritizes the integrity of ecosystems and promotes biodiversity conservation. This plan would involve identifying specific zones within a region that possess unique ecological features, such as forests, wetlands, or wildlife habitats. It would outline guidelines and regulations to ensure responsible tourism practices in these areas, minimizing environmental negative impacts.

Zone, I encompass regions like Udhewadi, Thoran, Nandgaon, and Khandshi, and requires careful protection and conservation due to its unique composition of forests, steep slopes, and dams. The primary objective of the Zone I strategy is to preserve its low development status and safeguard the rich biodiversity and ecological balance it offers. The extensive forests within Zone I are home to diverse flora and fauna and play a vital role in maintaining ecosystem health. Measures to prevent soil erosion and ensure slope stability are crucial due to the higher slopes in this zone.

ZONE 01			
Sector	Objective	Action	Proposal
Environment	To Protect Fragile Areas, Forest Areas and to link the Tourism aspect.	Ensure controlled development in designated Fragile areas and Forest areas	Buffer Areas with Development Control regulations.
	To increase areas under forest cover and promote economy generation through forest produce.	Ensure that all forest lands are preserved. Afforestation programmes be advised where degraded forests are seen.	Afforestation zone Biodiversity Parks Regional Parks Van Dhan Vikas Kendra
	To promote sustainable agricultural practices.	Sustainable Agriculture Belt	It is recommended to promote sustainable agricultural practices in rural areas.
	To Preserve rivers, lakes, and canals.	Protect all the water bodies	15m of buffer from HFL will be proposed for the major rivers and tributary which will be developed as riparian forests. This will not only help in arresting water pollution but help in maintaining the water ecology.
Tourism	Management of tourist spots.	The preservation of biodiversity and the protection of visitors' safety depend on strict compliance to rules and regulations.	At tourist hubs, tourist spots, ropeway, Eco homestays Udhewadi, Thoran, Karandoli. etc.
	Preserving heritage tourist spots.	Maintaining sanctity and cleanliness at the place of heritage spots, and forts.	Awareness and Education Campaigns Rajmachi, Dhak, Kurvande etc.
Infrastructure	Gaothan Areas	Provide primary facilities	Rest areas, camps, shops, etc. by the Zilla Parishads. Implementation of the bed and breakfast scheme at these base villages. Adequate eco-friendly public toilets should be provided at proper locations along with first aid facilities. Udhewadi, Nandgaon, Jambhivai, Thoran etc.
	Gaothan Areas Buffer	Buffer Areas (1.0 FSI for Gaothan Areas 0.4 FSI for Expansion Areas)	Buffer zone (0-100m) – Gaothan expansion Buffer zone (100m – 250m) – Only environmental related activities such as agriculture, recreation area to be allowed. Buffer zone (250m- 500m)- Conservation prone area.

FIGURE 5(a)

International Conference on Future of skills in Architecture, Design, Planning and Allied Fields: A way forward for better Industry and Society

Zone II, comprising areas like Morave, Shilimb, Tikona, Ajivali, presents opportunities for agrotourism development and sustainable growth. While it may have limited potential for environmental conservation compared to Zone I, agrotourism can leverage the region's agricultural resources and cultural heritage to promote responsible development practices. Agrotourism initiatives educate visitors about sustainable farming methods, local food production, and the preservation of traditional knowledge. This approach fosters economic growth, employment opportunities, and the conservation of agricultural biodiversity and cultural heritage. Sustainable development practices, community involvement, and collaboration between sectors are crucial for the success of Zone II's strategy.

ZONE 02			
Sector	Objective	Action	Proposal
Environment	To Protect Fragile Areas, Forest Areas and to link the Tourism aspect.	Ensure controlled development in designated Fragile areas and Forest areas	Buffer Areas with Development Control regulations.
	To promote sustainable agricultural practices.	Sustainable Agriculture Belt	It is recommended to promote sustainable agricultural practices in rural areas.
	To Preserve rivers, lakes, and canals.	Protect all the water bodies	Rivers will have a 250 m buffer from the highest flood line, which will be an activity-free zone. 15m of buffer from HFL will be proposed for the major rivers and tributary which will be developed as riparian forests. Dams (0-500m Buffer): activity-free zone. (Above 500 m Buffer): Activities which are permitted Traditional grazing by domestic animals, traditional capture fishing and organic farming, recreational activities
Tourism	To promote sustainable agricultural practices.	Sustainable Agriculture Belt	It is recommended to promote sustainable agricultural practices in rural areas: Khandshi, Nandgaon, Jambhivali etc.
	Management of tourist spots.	The preservation of biodiversity and the protection of visitors' safety depend on strict compliance to rules and regulations.	At tourist hubs, tourist spots, ropeway, Eco homestays Morave, Shilimb, Tung, Tikona. etc.
	Preserving heritage tourist spots.	Maintaining sanctity and cleanliness at the place of heritage spots, and forts.	Awareness and Education Campaigns Kale, Thakursai etc.
Infrastructure	Gaothan Areas	Sustainable Agriculture Belt	It is recommended to promote sustainable agricultural practices in rural areas: Shilimb, Ajivali, Jovan etc.
	Management of tourist spots.	The preservation of biodiversity and the protection of visitors' safety depend on strict compliance to rules and regulations.	At tourist hubs, tourist spots, ropeway, Eco homestays Tung, Tikona, Chevande Khadak. etc.
	Gaothan Areas Buffer	Buffer Areas (1.0 FSI for Gaothan Areas 0.4 FSI for Expansion Areas)	Buffer zone (0-100m) – Gaothan expansion Buffer zone (100m – 250m) – Gaothan expansion within this range can be allowed with restrictions for housing typology. Buffer zone (250m- 500m)- Only environmental related activities such as agriculture, recreation, eco-tourism activities.

FIGURE 5(b)

Zone III presents a dynamic landscape with a combination of development and agricultural areas, each offering distinct opportunities for various types of growth and sustainability. The eastern part of Zone III, including Varsoli and Malavali, features relatively flatter terrain, making it suitable for infrastructure development and urban expansion. This opens up possibilities for residential complexes, commercial establishments, and recreational facilities, contributing to economic progress and providing employment opportunities. It is essential to approach development in these areas with careful consideration of environmental impact, ensuring that sustainable practices are implemented to preserve natural resources and maintain a harmonious balance between urbanization and ecological integrity. On the other hand, the western part of Zone III, encompassing locations like Khandala, Kune, and Kurvande, presents unique challenges and opportunities due to its diverse topography and scenic landscapes. The steeper slopes and challenging terrain require meticulous planning and sustainable development approaches. However, the natural beauty of these regions makes them highly attractive for tourism and recreational activities. Developing eco-friendly resorts, adventure tourism facilities, and nature trails can capitalize on the inherent charm of these areas, promoting sustainable economic growth and supporting the conservation of natural resources.

International Conference on Future of skills in Architecture, Design, Planning and Allied Fields: A way forward for better Industry and Society

ZONE 03			
Sector	Objective	Action	Proposal
Environment	To Protect Fragile Areas, Forest Areas and to link the Tourism aspect.	Ensure controlled development in designated Fragile areas and Forest areas	Buffer Areas with Development Control regulations. Kune, LMC Forest Area, Varsoli etc.
	To Preserve rivers, lakes, and canals.	Protect all the water bodies	15m of buffer from HFL will be proposed for the major rivers and tributary which will be developed as riparian forests. LMC Area, Kevregaon, Devghar, Varsoli etc.
	To Preserve Ground Water level.	Reduce and prevent pollution and degradation of groundwater	Prohibit water polluting activities in high infiltration zones with high groundwater potential. Tungarli, Sadapur etc.
	To Encourage water Conservation and recycling.	City Water Balance Plans (CWBP) and City Water Action Plans (CWAP)	Rainwater harvesting will be taken up by cluster of villages and Lonavala municipal council area, creating a local water source, making it self sufficient.
Tourism	Preserving heritage and religious tourist spots.	1. Maintaining sanctity and cleanliness at the place of pilgrimage can be outsourced to third party dealers who specialize in such activities.	Cultural Hub: Karla & Bhaje
	To form a Sustainable Development Strategy by providing Rural experience to tourists.	To propose Agro tourism to provide/education to the public and promote the products of the farm and generate additional farm income and To promote Eco-home stays.	Agro Resorts, Home Stays, Organic farming and allied activities: Varsoli, Vaksai, Vehergaon, Kunegaon etc.
	To promote sustainable agricultural practices.	Sustainable Agriculture Belt	It is recommended to promote sustainable agricultural practices in rural areas: Devghar, Sadapur, Kevregaon, Dongargaon etc.
	Public Private Partnership Model for growth in Tourism Sector	Accelerate projects through private sector Investments/PPP mode in tourism sector	1. Operation and Maintenance of existing tourist spots 2. MICE Tourism: Khadala, Kurvande, Kunegaon etc.
	Management of tourist spots with the help of Smart ticketing systems	Install a smart ticketing system which will provide a single card for easy facilitation of tourist related transactions across the region.	At tourist hubs, tourist spots, ropeway, hotels, Eco and Agro resorts. Devale, Bhaie, Malavali, Aundhe Kh. etc.
Providing Fiscal Incentives to promote sustainable development	1. Additional Incentives for Sustainable tourism. 2. Incentives for Promoting Bed and Breakfast Scheme. 3. Formation of designated marketing organization.	Green Card System: 1. Incentives for Homestays/ B&B's/ Food and Ticketing. Within the Region	
Infrastructure	Gaothan Areas	Sustainable Agriculture Belt	It is recommended to promote sustainable agricultural practices in rural areas: Vehergaon, Kusgaon, Vaksai etc.
	Gaothan Areas Buffer	Buffer Areas (1.0 FSI for Gaothan Areas 0.4 FSI for Expansion Areas)	Buffer zone (0-100m) – Gaothan expansion Buffer zone (100m – 250m) – Gaothan expansion within this range can be allowed with restrictions for housing typology. Buffer zone (250m- 500m)- Only environmental related activities such as agriculture, recreation, eco-tourism activities. Buffer zone (500m- 1000m)- Restrictions as per influence zone of nearest tourist sites.

FIGURE 5(c)

CONCLUSIONS

In conclusion, the meticulously crafted proposals for Zones I, II, and III present a holistic and inclusive approach to development, conservation, and sustainability. Zone I's unwavering focus on protecting its pristine forests, steep slopes, and invaluable dams is complemented by robust measures that safeguard biodiversity, prevent soil erosion, and ensure the long-term sustainability of water resources. Zone II's astute recognition of agrotourism's untapped potential underscores the endeavor to harness agricultural riches, embrace time-honored practices, and safeguard cultural heritage while paving the way for responsible and sustainable growth. In Zone III, a harmonious equilibrium between urbanization and agricultural preservation emerges, guided by conscientious land-use practices, thoughtfully planned infrastructure, eco-friendly tourism initiatives, and unwavering support for local farmers. These forward-thinking proposals place paramount importance on environmental preservation, sustainable methodologies, and meaningful community engagement, all converging toward a prosperous and sustainable future that cherishes the invaluable tapestry of our natural resources and enriches the lives of present and future generations. Moving forward, the success of this project relies on the effective implementation of the proposed strategies and the collaboration of various stakeholders. It is imperative to establish a dedicated project management team that will oversee the execution of the plans for each zone, ensuring adherence to timelines and objectives. This team should consist of representatives from government agencies, local communities, tourism organizations, environmental experts, and relevant industry professionals. Regular monitoring and evaluation of the project's progress should be conducted to assess the effectiveness of the implemented measures and identify areas for improvement.

International Conference on Future of skills in Architecture, Design, Planning and Allied Fields: A way forward for better Industry and Society

References

- Ajit Kiran, S. Kulkarni "Tree species assessment at Lohgad and Visapur fort-a part of western ghats, Maharashtra (India)"
- Bhavan, p. (n.d.). Government of India Ministry of Environment and Forests.
- Bhawan, t. (n.d.). Government of India Ministry of Tourism (niche tourism division) office memorandum national strategy for sustainable tourism.
- government of India Ministry of Environment, Forest and climate change guidelines on sustainable eco-tourism in forest and wildlife areas 2021. (n.d.).
- X. Liquan, & Z. Junqing,(2016). the new town development in an ecologically sensitive area based on resilience thinking. procedure - social and behavioral sciences, 216, 998–1005.
- M. Joshi, dr. v. (2014), "Eco-tourism - a key to protecting biodiversity in Maharashtra" international journal of innovative research in Science, engineering, and Technology, 03(08), 15167–15174.
- Maharashtra State Forest Policy-2008. (n.d.).
- MMRDA Report. (n.d.).
- Mount_Abu_Zonal Masterplan_Vollume_I. (n.d.).
- S. Nair (2011) "Report of the western ghats ecology expert panel part I" (Madhav Gadgil report).
- Open access building evidence conservation globally. (n.d.)
- R. Singh, & M. Ahmed, (2021). a report on butterfly diversity in a regenerated forest area in Atvan, Lonavala, Maharashtra, India. ~ 234 ~ journal of entomology and zoology studies, 9(4), 234–241.
- Tourism survey for the state of Maharashtra tourism development corporation limited. (MTDC), Mumbai. (n.d.).
- Wildlife_Action_Plan_2017_31. (n.d.).